



484 County Road 113
Carbondale, CO 81623
970 945 7777
Fax – 8389

Axle Offset Plate Instructions

<u>Quantity in kit</u>	<input checked="" type="checkbox"/>	<u>Part</u>
2		Axle offset plates
2		3/8"-16 x 3" hex head bolts
2		3/8"-16 x 2" hex head bolts
2		3/8"-16 x 1/2" socket head cap screw

Offroad Design axle offset plates allow you to move your axle forward or back 1/2", 1" or 1-1/2" while lifting the vehicle as little as possible.

One common misconception concerns the need for extra high strength center pins/bolts, but there isn't much reason to have such a thing. The u-bolts clamp the axle and spring together, the only way there is any force put onto the center pin is if the u-bolts are loose. Check those u-bolts, that's a maintenance item on a leaf sprung 4x4!

1. Install socket head (allen key) cap screw into the center hole in the offset plate, it can be threaded in from either side of the plate. Snug is tight enough, the bottom of the head may not bottom out on the plate but it's not a problem.

The socket head screw will be the center pin that locates into the hole in the spring perch on the axle. **The socket head screw always goes in the center hole, regardless of how you're offsetting the axle.**



2. Cut off the exposed threads and grind it flush, a flap wheel works well.



3. With leaf spring disconnected from axle, install two c-clamps on the leaf spring to hold the individual leaf springs together. Make sure to leave enough room between them for you to install your offset plate.



4. Remove the old center pin. A set of locking pliers on the round side of the bolt are often helpful.



Selecting the bolt to hold the spring pack together:

We send two different length bolts to cover most leaf spring packs.

The shorter 2" bolt will work with spring packs from 1" to 1-3/4" thick.

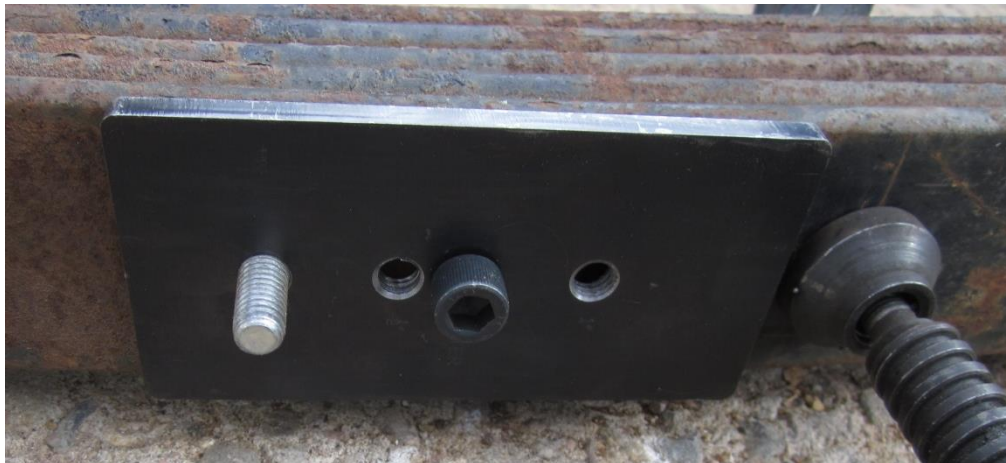
The longer 3" bolt will work with spring packs from 2" to 2-3/4" thick.

If you have a very thin or very thick spring pack, you may need to source your own bolt.

5. Install 3/8" hex head bolt into spring pack from the top of the spring pack, this is the opposite direction that a center pin is usually installed from.



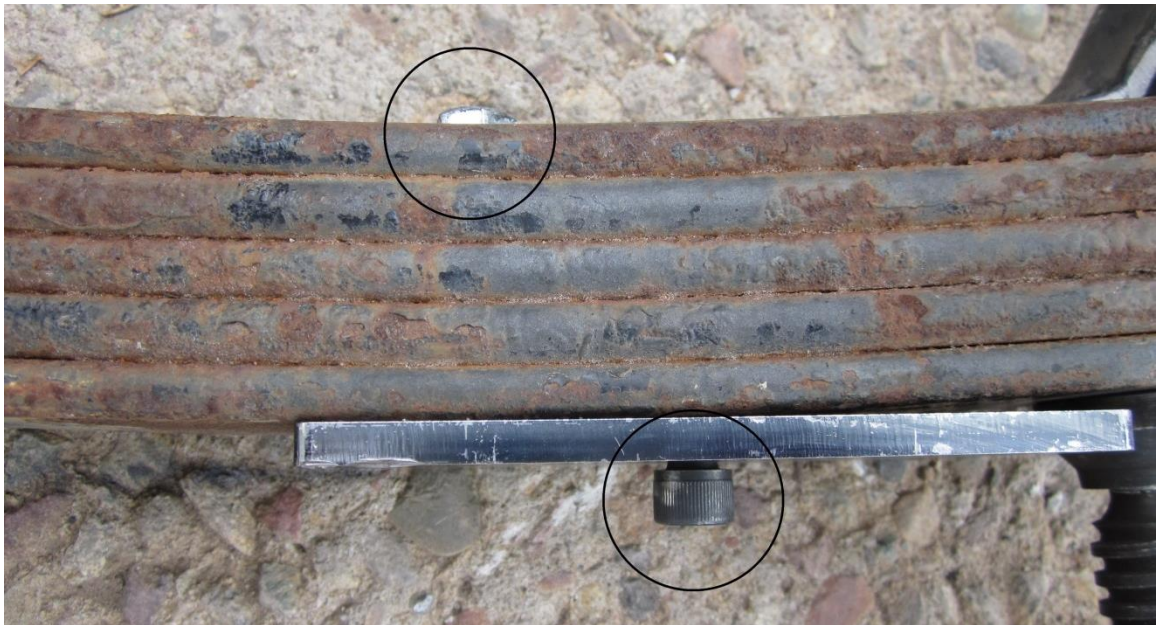
6. Thread 3/8" hex bolt into offset plate using the threaded hole with the corresponding offset you want to use. The plate is engraved with the different options. Snug is fine here, there isn't any force on these bolts, they just hold the spring pack together.



7. Cut off the exposed threads and grind it flush, a flap wheel works well.



8. You will likely have to clearance your u-bolt plate for the bolt head, drilling a hole for clearance is usually easiest.
9. That's it! The picture below shows how the pin going into the axle perch is now offset.



Don't sweat it if the offset plate doesn't exactly match the arch of the spring, the u-bolts will clamp everything tight.